

PRELIMINARY AREAL PLAN FOR WLC 2018

This document is meant for guidance, and will show the main setup for WLC 2018. Deviations to this plan may occur, but hotel, arena for competitions, sponsor areas, flow of audience and fans are mainly set.

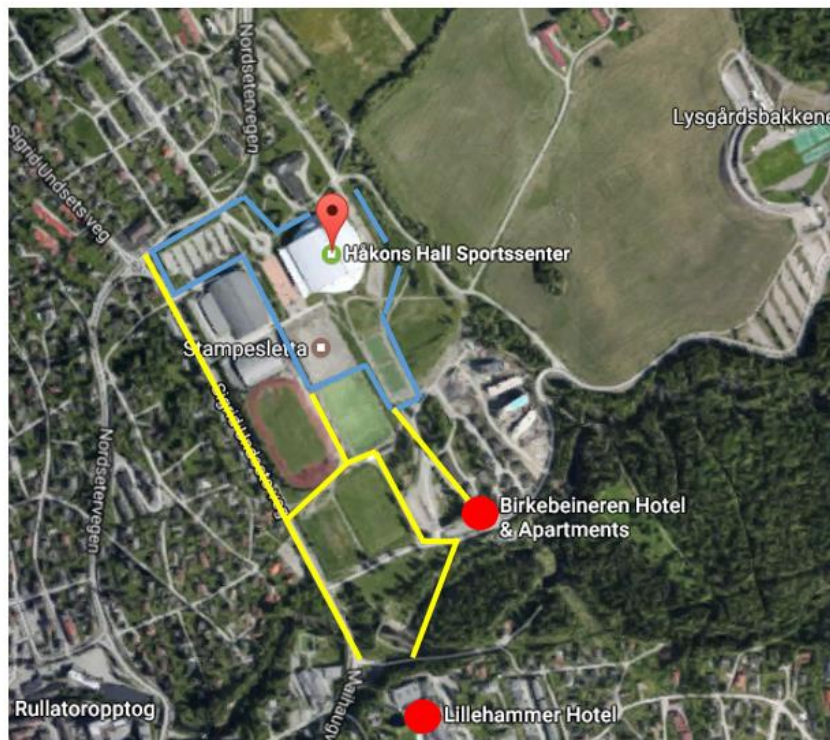
Detailed descriptions of the competition area, serving/dining areas and sponsor arenas need further setup.

This presentation includes two maps and three orthographic views:

- 1.1 Overall area
- 1.2 Map over competition area
- 2.1 Overall map – 3D view
- 2.2 Map over competition area 3D view
- 2.3 Map over competition area 3D view

1.1 – OVERALL IMAGE TOTAL AREA

- Blue – area around Håkons hallen where competition will be conducted (details to be set in next drawing)
- Yellow – pathways to the arena for Fans, competitors and people how booked WLC packages thru IALC.
 - o The longest yellow line to the left in the picture is 620 meters, 678 yards.
- Red dots – Hotels for WLC booked attendance.



Main sponsors of the ialc:



1.2 – MAP OVER COMPETITION AREA



1. **Parking for audience** – Audience that will attend WLC will mainly be parking at the indicated place. For locals, we think that many will arrive by foot. The yellow line indicates the normal entrance to the arena.
2. **Possible area for sponsors**, local market, food etc. The indicated area 2 on the right side of the footage is meant for team tents and/or service tents. Area on the left is 250 meters all around the edged, 2800 m².
3. **Support areas** regarding administration, offices for press, ialc, result service, toilets, showers and wardrobes.
(The competitor's equipment will be stored in Håkons Hall.)
4. **Competition area** – We believe that, except for the safety zones, there will be possible to view the competition from almost every direction. We are planning to arrange a couple of stands for audience. We are also planning on setting up a dining area in the south end of Håkons Hall.
The Area is 350 meters all around the edged

Main sponsors of the ialc:



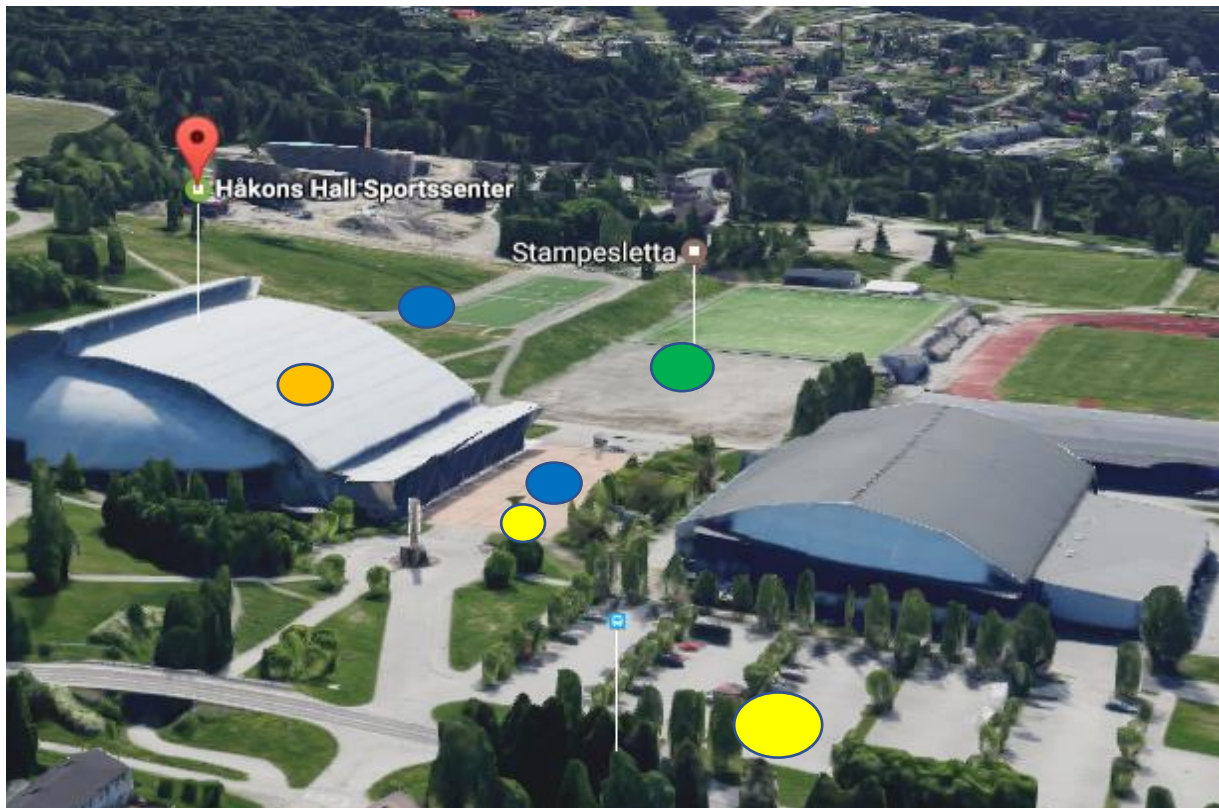
2.1 OVERALL MAP – 3D VIEW



Main sponsors of the ialc:



2.2 AND 2.3 MAP OVER COMPETITION AREA 3D VIEW



Main sponsors of the ialc:

